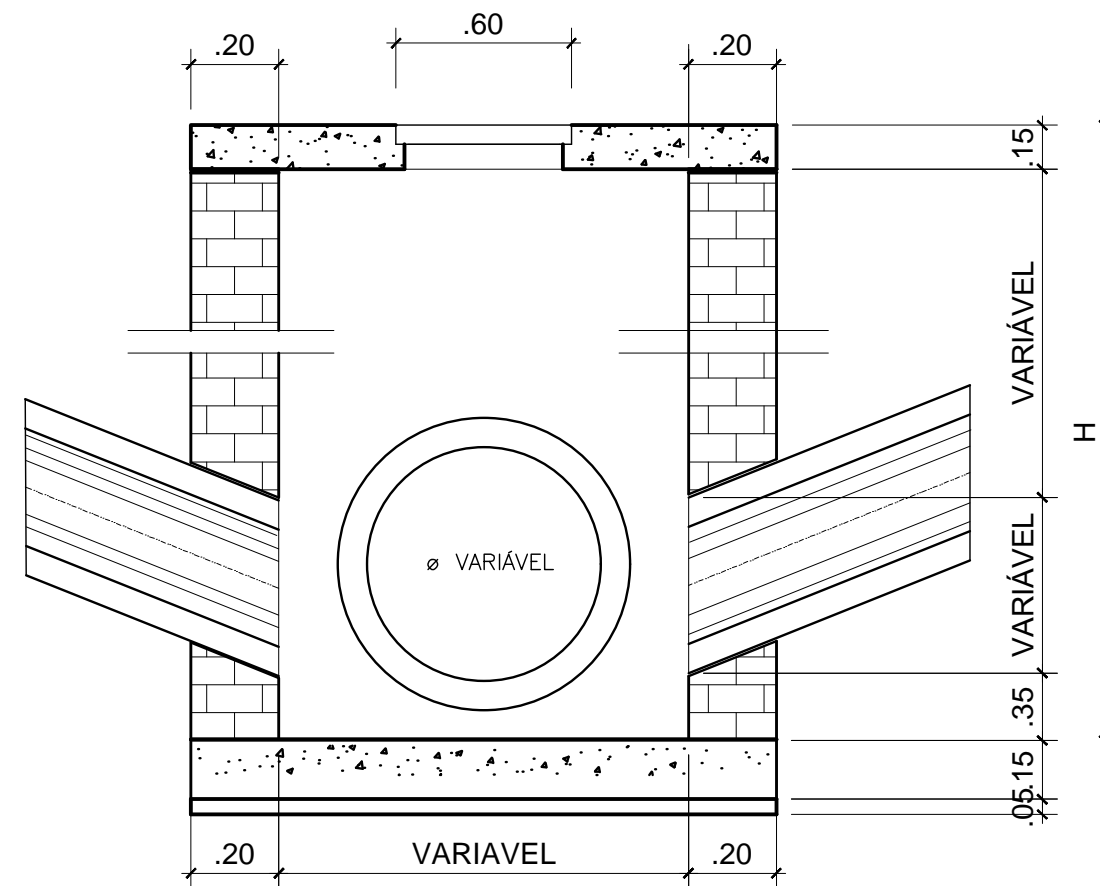
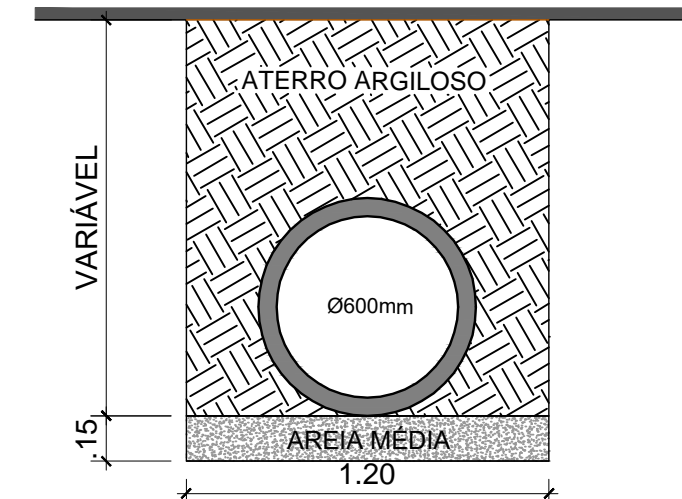


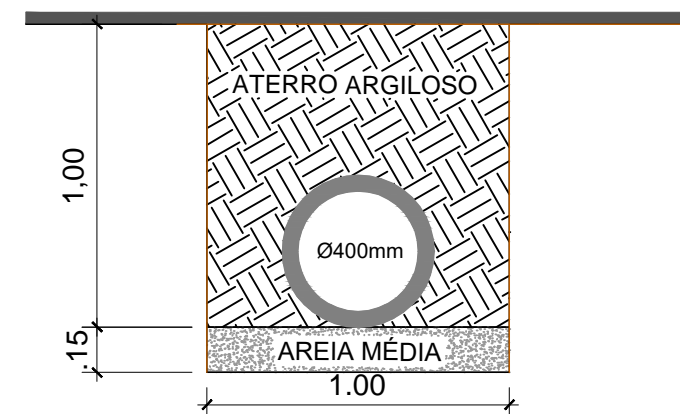
POÇO DE VISITA



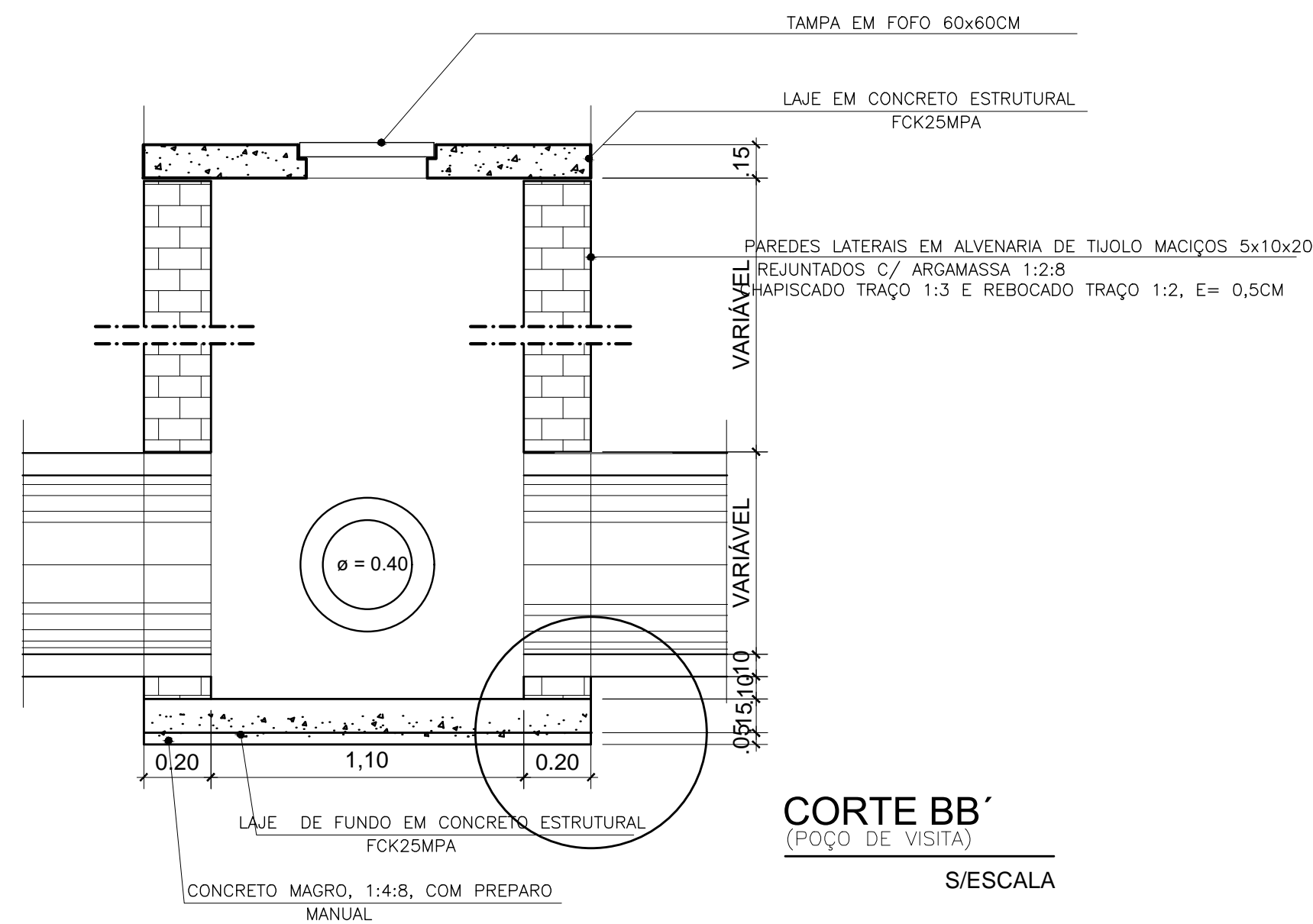
CORTE A A' (POÇO DE VISITA) S/ESCALA



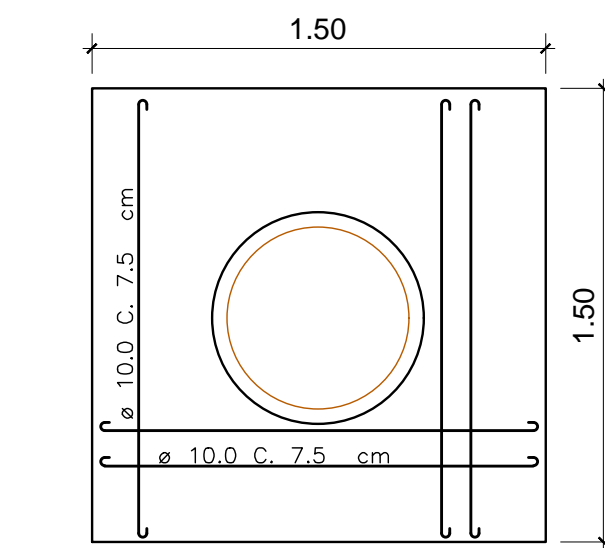
DETALHE DE VALA PARA TUBOS CA Ø600mm S/ ESCALA



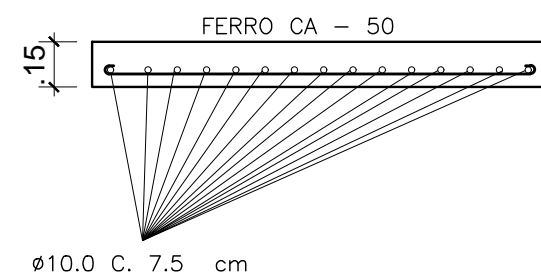
DETALHE DE VALA PARA TUBOS CA Ø400mm S/ ESCALA



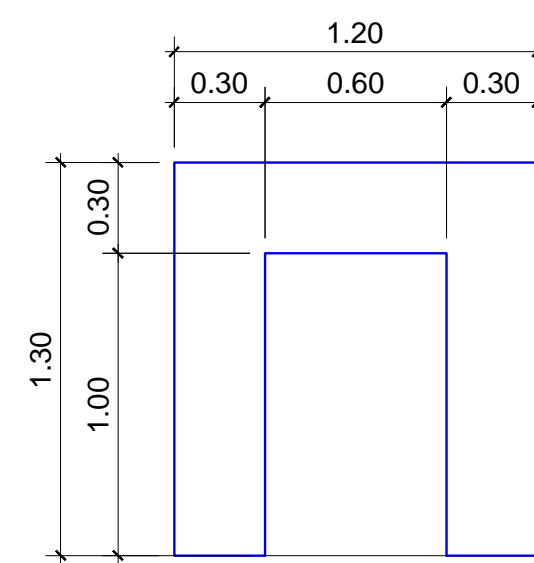
CORTE BB' (POÇO DE VISITA) S/ESCALA



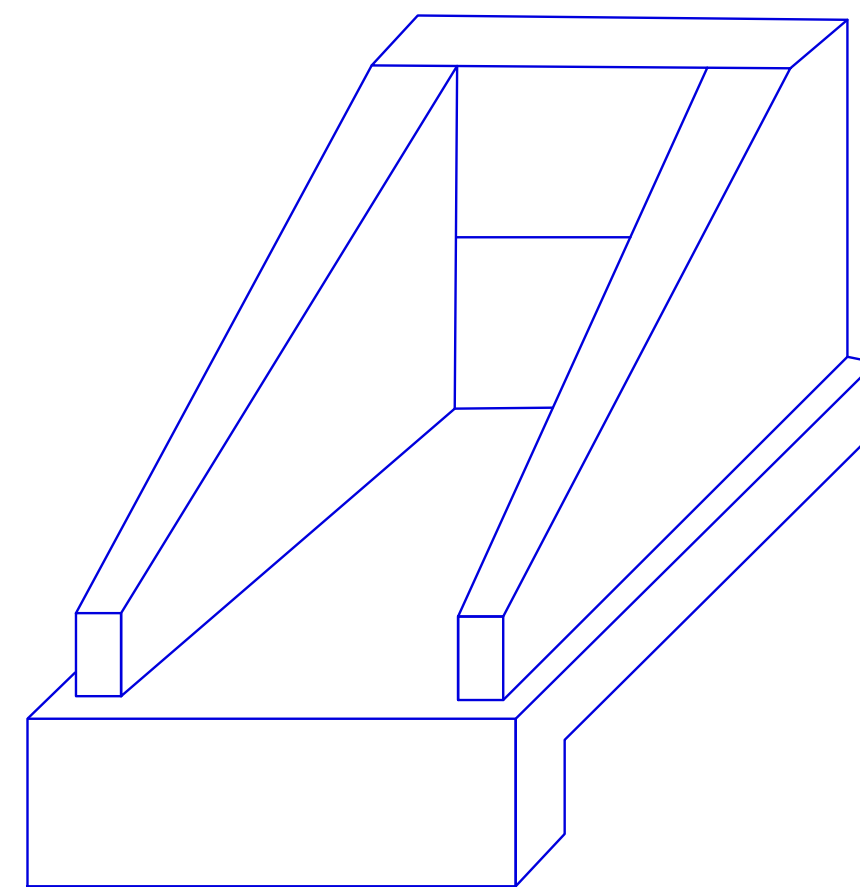
DETALHE LAJE SUP e FUNDO (POÇO DE VISITA) S/ESCALA



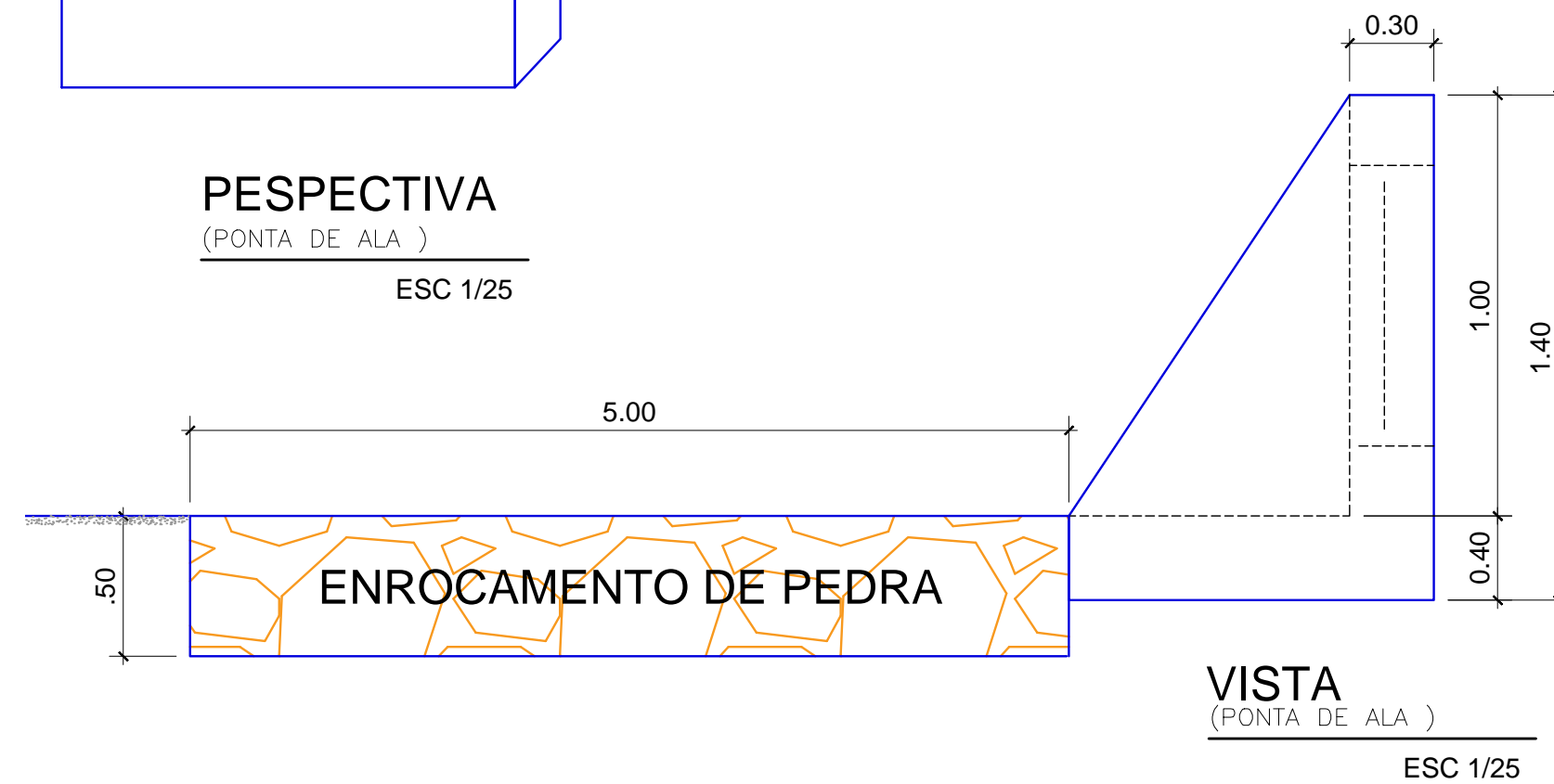
PONTA DE ALA



PLANTA (PONTA DE ALA) ESC 1/25

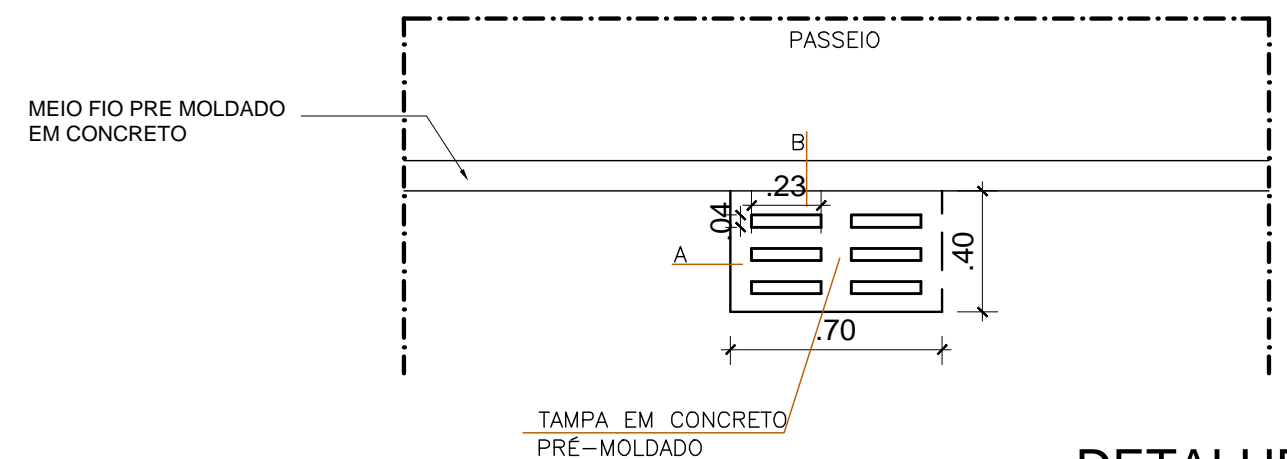


PERSPECTIVA (PONTA DE ALA) ESC 1/25

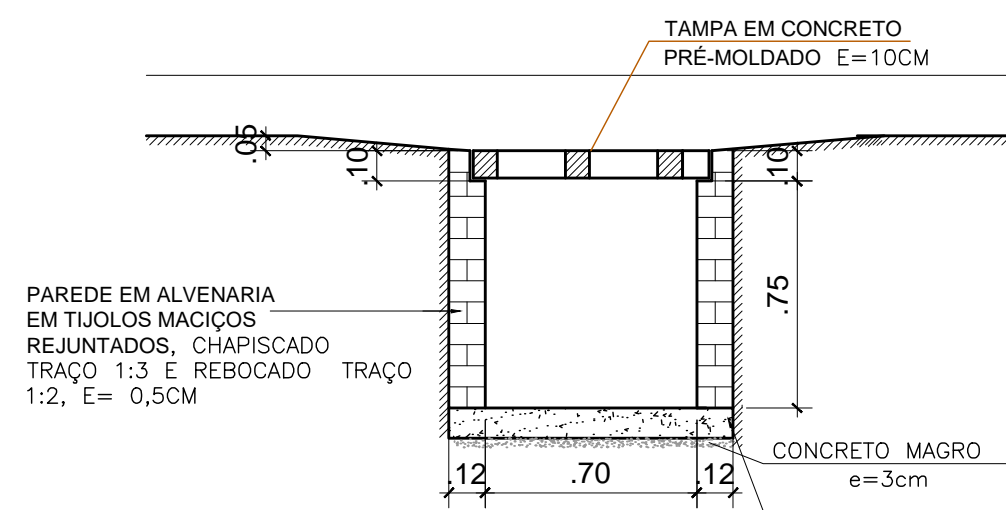
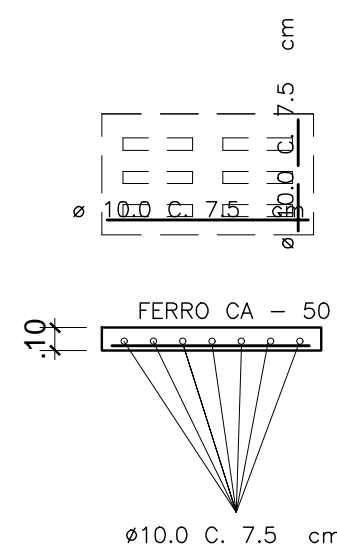


VISTA (PONTA DE ALA) ESC 1/25

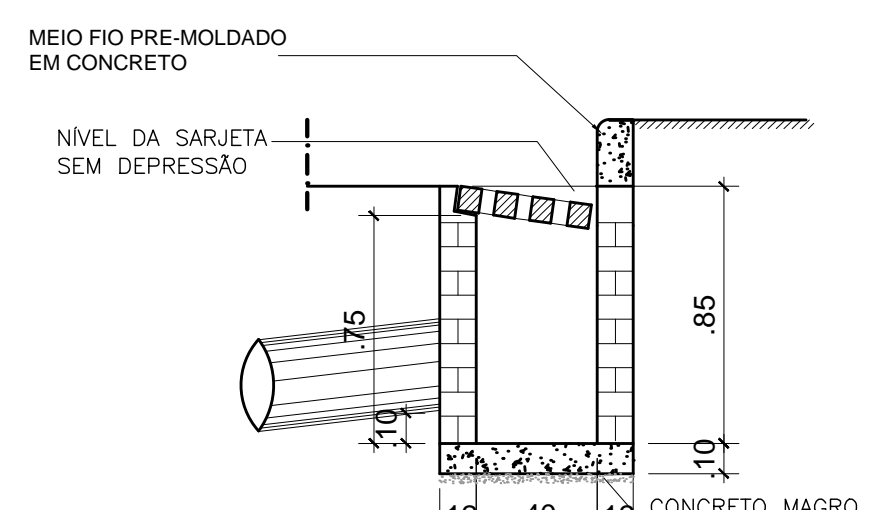
BOCA DE LOBO



DETALHE (BOCA DE LOBO SIMPLES) S/ESCALA



CORTE AA (BOCA DE LOBO) S/ESCALA



CORTE BB (BOCA DE LOBO) S/ESCALA

REV.	DATA	DESCRIÇÃO	RESP.
PAVIMENTAÇÃO E DRENAGEM BAIRRO CLIMA BOM SANTANA DO IPANEMA-AL			
LOCALIZAÇÃO: END: BAIRRO CLIMA BOM CIDADE: SANTANA DO IPANEMA-AL		ÁREAS:	
Espaço reservado aos carimbos de aprovação:			
PROVADO  PREFEITURA MUNICIPAL DE SANTANA DO IPANEMA Engenheiro Civil RN 0256086124			
PROJETO:			
RESPONSÁVEL TÉCNICO:			
PROJETO DE PAVIMENTAÇÃO			
PRANCHA: 04/05	CONTEÚDO: DETALHES DA DRENAGEM	CATEGORIA: PAV	
DESENHO: MARCUS NUNES	ESCALA: INDICADA	DATA: MAIO / 2020	REVISÃO:
CÓD. EMPREEND. PCB	ESPECIALIDADE PAV	FASE E	QUANT. DESENHOS 004/005-01